



State



vs



Local

Health Departments

Develops overarching health policies



Implements and adapts policies to local community needs

Monitors disease outbreaks on a statewide scale



Conducts surveillance and responds to local disease trends

Establishes and enforces health regulations statewide



Enforces health regulations within its jurisdiction

Allocates funding to local health departments



Receives funding from state and implements programs locally

Coordinates statewide emergency responses



Develops local emergency preparedness plans and response

Develops statewide health education campaigns



Implements health education programs tailored to local needs

Oversees licensure and inspection of healthcare facilities statewide

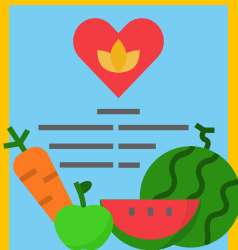


Conducts inspections and enforces regulations locally



Analogy

The chef who writes the recipe.



The cook who brings the recipe to life.



Example

Sets policy on vaccination rates.



Holds community vaccine clinics.



To summarize, state health departments provide the framework, while local health departments make that framework a reality with each partner playing a pivotal role.